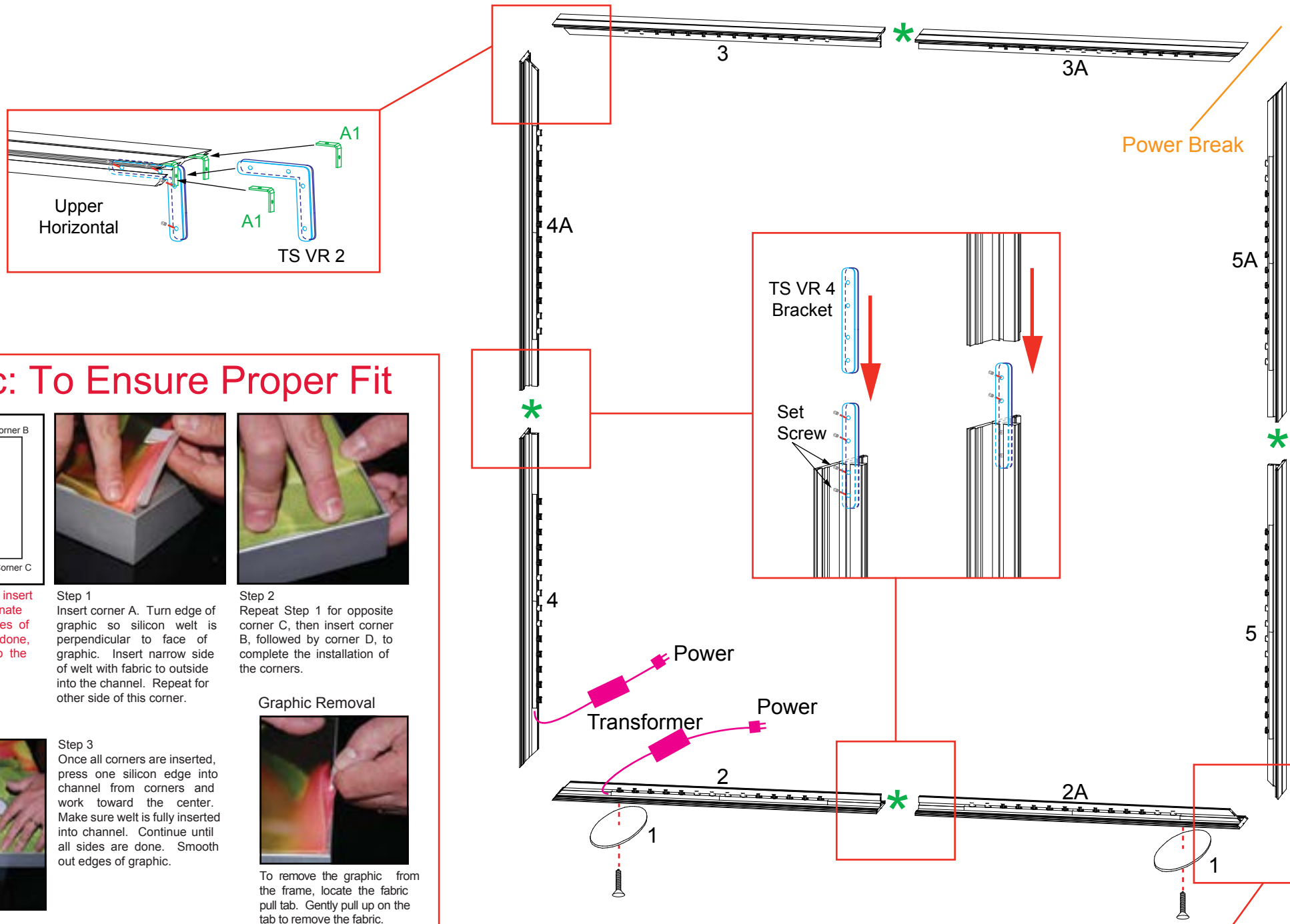


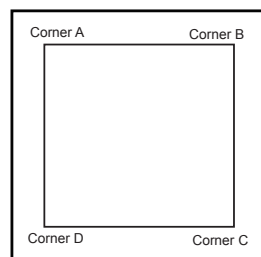
Item	Qty.	Description
1	2	Base Plate
2/2A	1/1	42"w Horizontal Extrusion
3/3A	1/1	42"w Horizontal Extrusion
4/4A	1/1	43.141"h Vertical Extrusion
5/5A	1/1	43.141"h Vertical Extrusion

Steps:

- 1) Slide TWO-PIECE **TS RV 4** straight bracket into Interior Center Slot of the blunt ends of extrusions so that two of the set screws are inside groove; tighten the two set screws to secure.
- 2) Slide connecting extrusion over exposed end of bracket; tighten the two remaining set screw to secure extrusions.
- 3) Attach base plates [1] to horizontal assembly [2/2A]. Use bolts, washers, and hex nuts.
- 4) Slide TWO-PIECE **TS RV 2** L-bracket into Interior Center Slot of horizontals [2 & 2A] and [3 & 3A] so that two set screws are inside groove; tighten the two set screws to secure.
- 5) Slide two A1 L-Brackets into outer interior grooves of upper and lower horizontal assemblies; secure with set screws.
- 6) Slide vertical extrusion assemblies [4/4A] and [5/5A] over exposed ends of brackets in lower horizontal assembly [2/2A]; tighten set screws.
- 7) Slide exposed ends of installed brackets of upper horizontal assembly [3/3A] into open ends of verticals; secure with set screws.
- 8) Connect lighting power cords as indicated and attach transformers.
See Light to Light Connections & Light to Transformer detail.
- 9) Apply SEG Graphics to both sides of assembled frames.
See SEG Graphic Installation in General Information.



Graphic: To Ensure Proper Fit



It is important to first insert graphic into each alternate corner then to the sides of the frame. If this is not done, graphic will not fit into the frame correctly.



Step 1
Insert corner A. Turn edge of graphic so silicon welt is perpendicular to face of graphic. Insert narrow side of welt with fabric to outside into the channel. Repeat for other side of this corner.

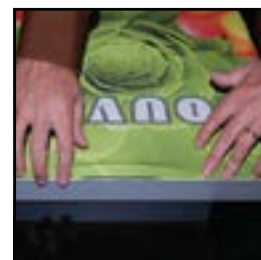


Step 2
Repeat Step 1 for opposite corner C, then insert corner B, followed by corner D, to complete the installation of the corners.

Graphic Removal

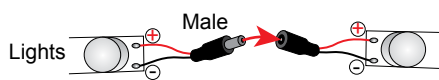


To remove the graphic from the frame, locate the fabric pull tab. Gently pull up on the tab to remove the fabric.

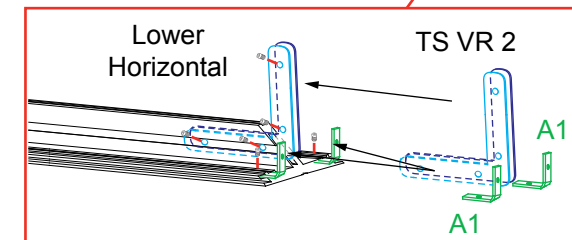
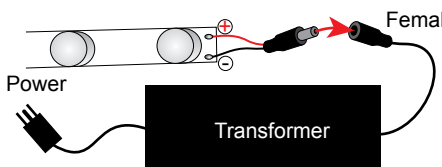


Step 3
Once all corners are inserted, press one silicon edge into channel from corners and work toward the center. Make sure welt is fully inserted into channel. Continue until all sides are done. Smooth out edges of graphic.

Light to Light Attachment



Light to Transformer Attachment



General Setup Instructions

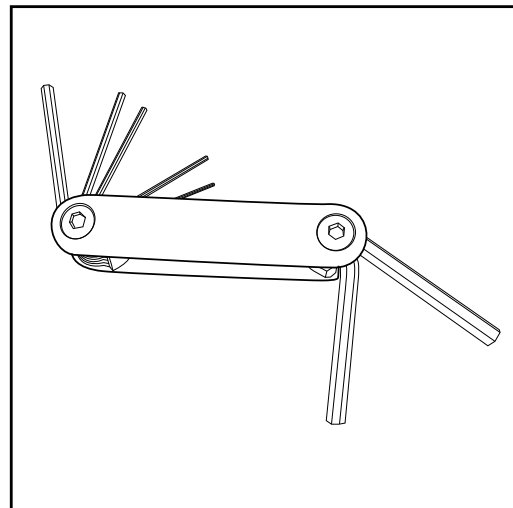
- Read entire setup instruction manual prior to unpacking parts and pieces.
- The setup instructions are created specifically for this configuration.
- Setup instructions are laid out sequentially in steps, including exploded views with detailed explanation for assembly.

Cleaning & Packing

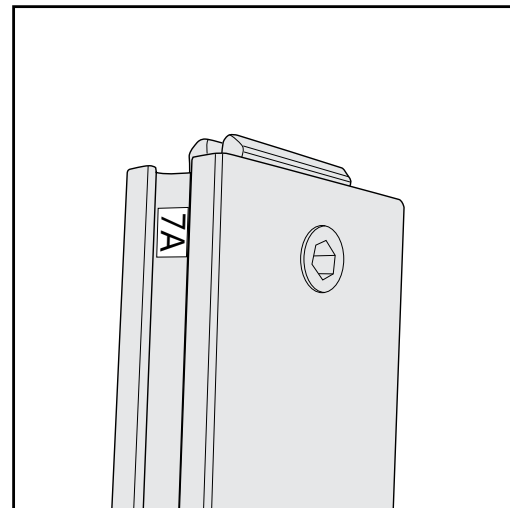
- For Cleaning Metal, Plex, & Laminate Parts: Use a **MILD NON-ABRASIVE** cleanser and soft cloth/paper towel to clean all surfaces.
- Keep exhibit components away from heat and prolonged sun exposure.
Heat and UV exposure will warp and fade components.
- Retain all provided Packing Materials. All provided packing materials are for ease of repacking & component protection.

Disassembly

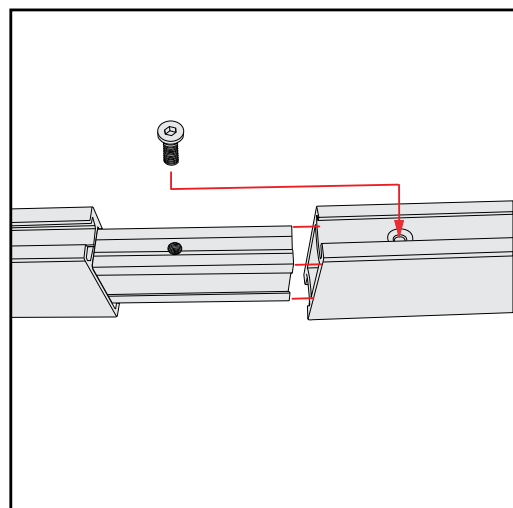
- For loss prevention, tighten all setscrews and locks during disassembly



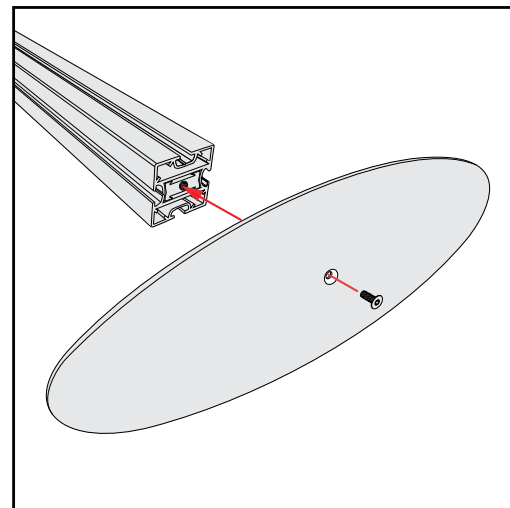
Hex Tool - Essential for Assembly



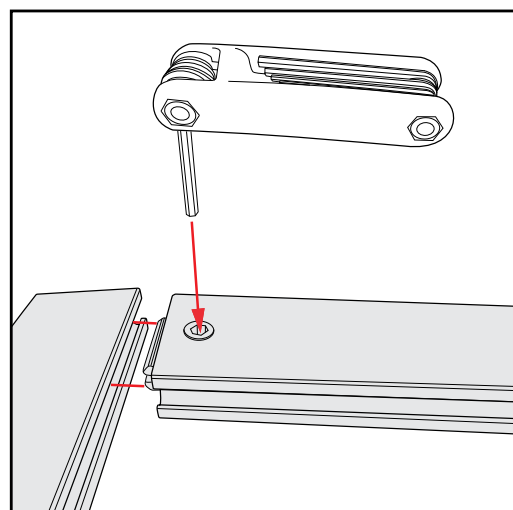
Part Identification - Numbering



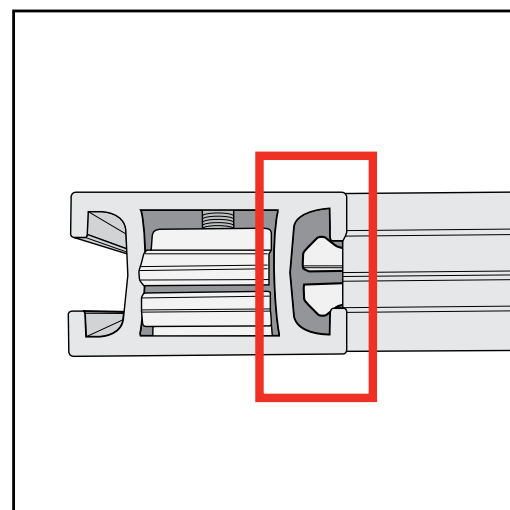
Spline Connection



Base Plate & Extrusion Connection



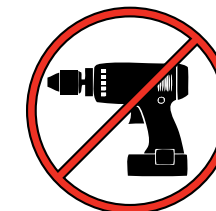
Extrusion & Lock Connection



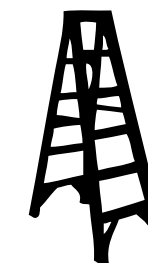
Engaged Lock



WARNING



DO NOT USE POWER TOOLS



LADDERS OR LIFTS
MAY BE REQUIRED



ALL CONNECTIONS MUST
BE TIGHTLY SECURED